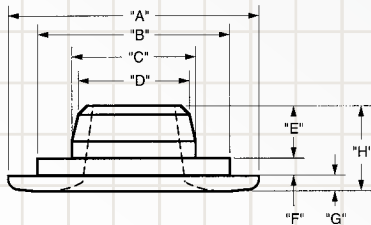
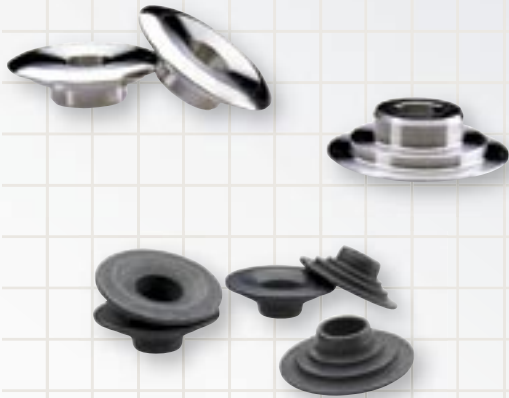


PPPC Valve Spring Retainers



These are available in custom sizes and materials. Call us with your specifications.

Titanium

Part #	Dimensions	
1550TR	1.550"x1.155"x.835"	Super Seven
2280TR	1.500"x1.155"x.750"	Super Seven
2281TR	1.500"x1.125"x.750"	Super Seven
2285TR	1.500"x1.160"x.700"	Super Seven
2286TR	1.500"x1.140"x.810"	Super Seven
2287TR	1.500"x1.140"x.810"	Mini Super Seven
2288TR	1.500"x1.175"x.630"	Mini Super Seven
2290TR	1.500"x1.120"x.730"	Super Seven
2291TR	1.500"x1.140"x.760"	Super Seven
2292TR	1.500"x1.140"x.740"	Super Seven
2294TR	1.575"x1.185"x.780"	Super Seven
2296TR	1.575"x1.185"x.890"	Super Seven
2395 TR	1.440"x1.070"x.700"	Super Seven
3309-7-16 TR	1.500"x1.120"x.750"	Super Seven
3309-10-16 TR	1.500"x1.120"x.750"	10°

Steel

Part #	Dimensions	
2380	1.500"x1.125"x.750"	Super Seven
2390	1.500"x1.120"x.730"	Super Seven
2395	1.440"x1.070"x.700"	Super Seven
2396	1.575"x1.185"x.890" x .680"	Super Seven

Valve Stem Seals

Part #	Description
146	5/16" Valve Stem Seal
500-16	Teflon™ for 1/2" Valve Guide and 11/32" Valve
530-16	Teflon™ for .530" Valve Guide and 11/32" Valve
R530-16	Rubber Seal for .530" Valve Guide and 11/32" Valve



We also inventory VITON valve stem seals in 7 mm, 5/16", 11/32" and 3/8" sizes.