

PPPC Spring Seats

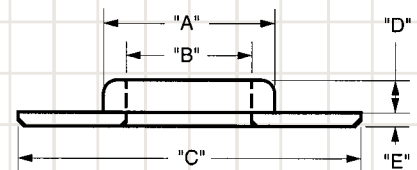


Spring Seats

Part #	I.D.	Locater	O.D.	Thickness
3300-16 SS	.567"	.716"	1.500"	.060"
3300-16/100 SS	.567"	.716"	1.500"	.100"
3300-16/160 SS	.567"	.716"	1.500"	.160"
3301-16 SS	.567"	.780"	1.600"	.060"
3303-16 SS	.567"	.680"	1.450"	.060"
3304-16 SS	.567"	.700"	1.500"	.060"
3305-16 SS	.567"	.746"	1.440"	.060"
3309-16 SS	.567"	.746"	1.500"	.060"
3309-16/040 SS	.567"	.746"	1.500"	.040"
3309-16/100 SS	.567"	.746"	1.500"	.100"
3309-16/160 SS	.567"	.746"	1.500"	.160"
3310-16 SS	.630"	.746"	1.500"	.060"
3311-16 SS	.555"	.501"	1.050"	.060"
3312-16 SS	.567"	.686"	1.500"	.060"
3312-16/100 SS	.567"	.686"	1.500"	.100"
3315-16 SS	.567"	.665"	1.625"	.060"
3316-16 SS	.567"	.765"	1.625"	.060"
3316-16 SS/M	.567"	.765"	1.550"	.060"
3340-16 SS	.567"	.875"	1.625"	.060"
3360-16 SS	.567"	.890"	1.625"	.060"
3385-16 SS	.567"	.832"	1.500"	.060"
3386-16 SS	.567"	.810"	1.500"	.060"
3386-16/100 SS	.567"	.810"	1.500"	.100"
3387-16 SS	.567"	.822"	1.500"	.060"
3388-16 SS	.630"	.810"	1.500"	.060"
3947-16 SS	.567"	.640"	1.625"	.060"
9205-16 SS	.567"	.730"	1.500"	.060"

The best protection for cylinder heads.

These seats and cups are precision machined from the finest steel and hardened to 60-62 RC. Their job is to center the spring on the valve guide and protect the cylinder heads from damage by the valve spring. Available in a variety of ID and OD sizes for different applications.



Available in custom sizes and materials. Call us with your specifications.

300 M Material

Part #	I.D.	Locater	O.D.	Thickness
3317-16 3M	.567"	.760"	1.540"	.060"
3318-16 3M	.567"	.735"	1.540"	.060"



PPPC Spring Cups

Part #	I.D.	Locater	O.D.	Thickness
3350-16 SS	.635"	1.550"	1.690"	.060"
3400-16 SS	.700"	1.570"	1.690"	.100"
3400-16/060SS	.700"	1.570"	1.690"	.060"
3410-16 SS	.625"	1.570"	1.690"	.100"
3420-16 SS	.567"	1.570"	1.690"	.060"